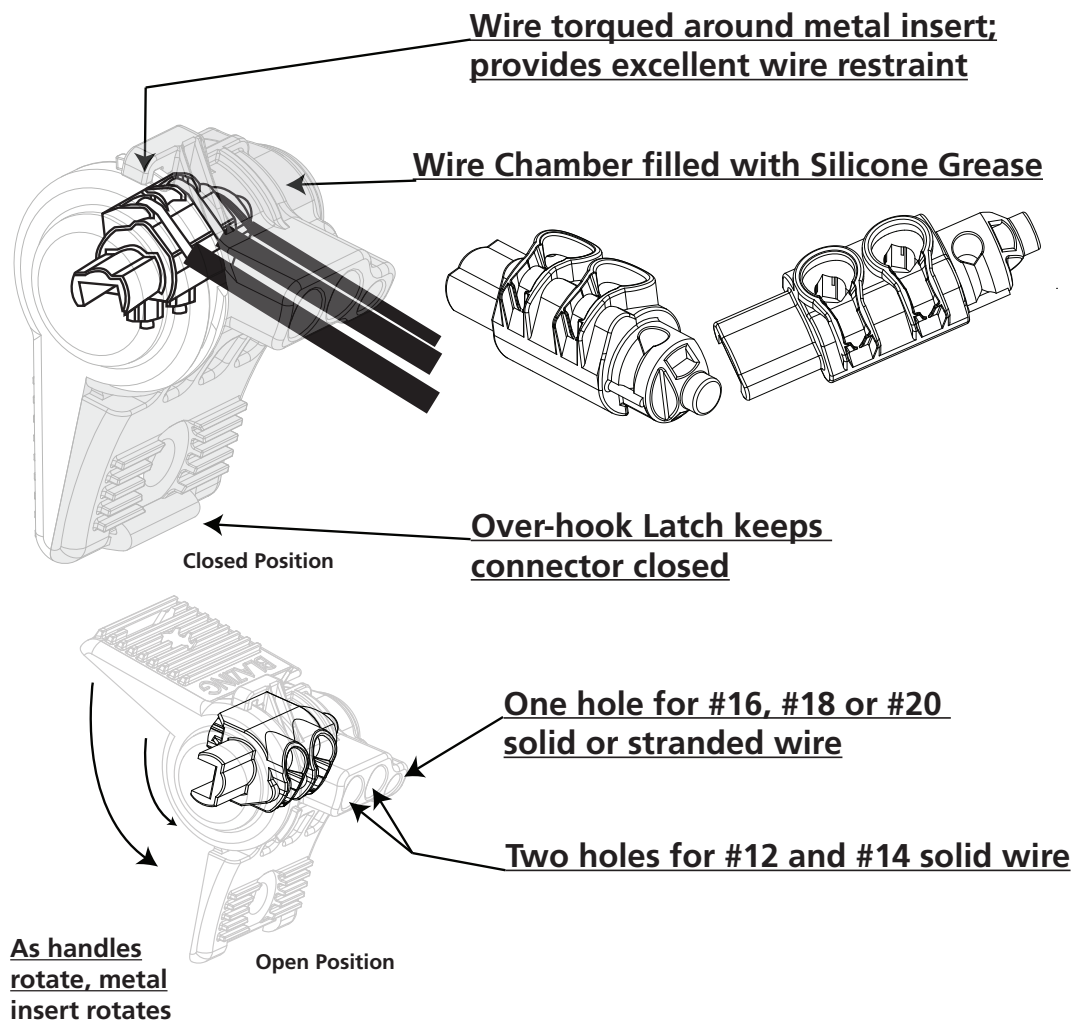


**BLAZING**  
INSTALL FASTER.

**BVS-2**



**For Multiple #18 or #20 Wire Combinations:**

Strip all wires to 5/8". Pre-twist stranded wires. Insert up to 3 solid or stranded #18 or #20 wires into each large hole and 1 #18 or #20 solid or stranded in the small hole. Hold wires in place while squeezing handles together until the latch snaps shut. Up to 7 wires total in connector.



Intertek

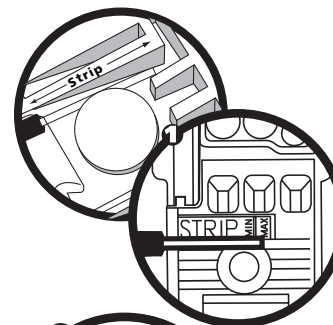
**2 #14 Sol, 1 #18 Str AWG CU**  
**300 Volts Max, 105°C Max**

**Raintight, Watertight, Submersible**  
**For Use in Damp & Wet Locations**

**486D Direct Bury Listed**

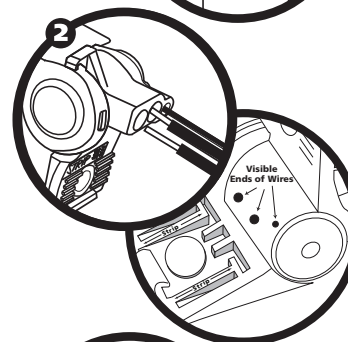
**Installation Instructions**

Always use caution, turn off power. Use on electrical circuits of 300 volts or less. Installation should always comply with local and national electrical codes.



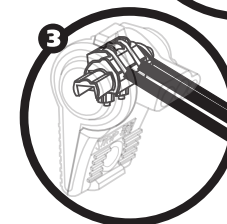
**Step 1**

Strip wires to 5/8". Use one of the strip guides molded into the connector for reference. Pre-twist stranded wires.



**Step 2**

Rotate handles fully apart beyond 90 degrees. Insert stripped wires into connector; #12-#14 in the large holes and #16-#20 in the small hole. Exposed ends of wires should be visible through the clear housing on the back.



**Step 3**

Hold wires in place while squeezing handles together until the latch snaps shut.

**PACKAGING QTYS.**

PART	PACKAGE	CARTON	MIN. ORDER
BVS-2	20	100	100